



MONTHLY MEMBERSHIP PROGRESS REPORT

District 318 E

Results as of: 2/28/2015

GMT: Mahesh Pasqual

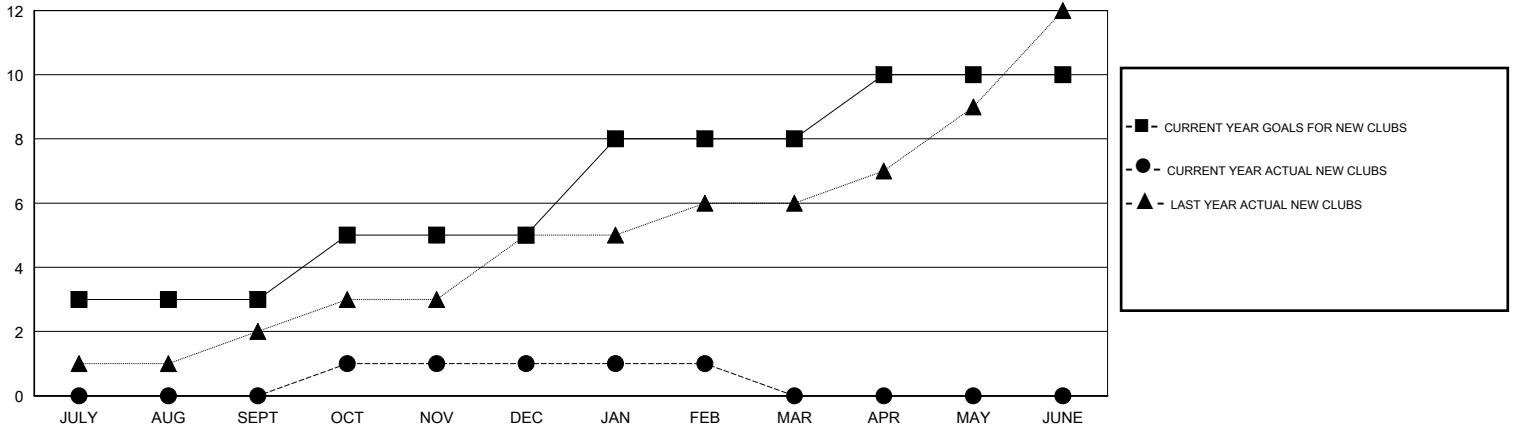
LOCATION INDIA

GMT CA 6

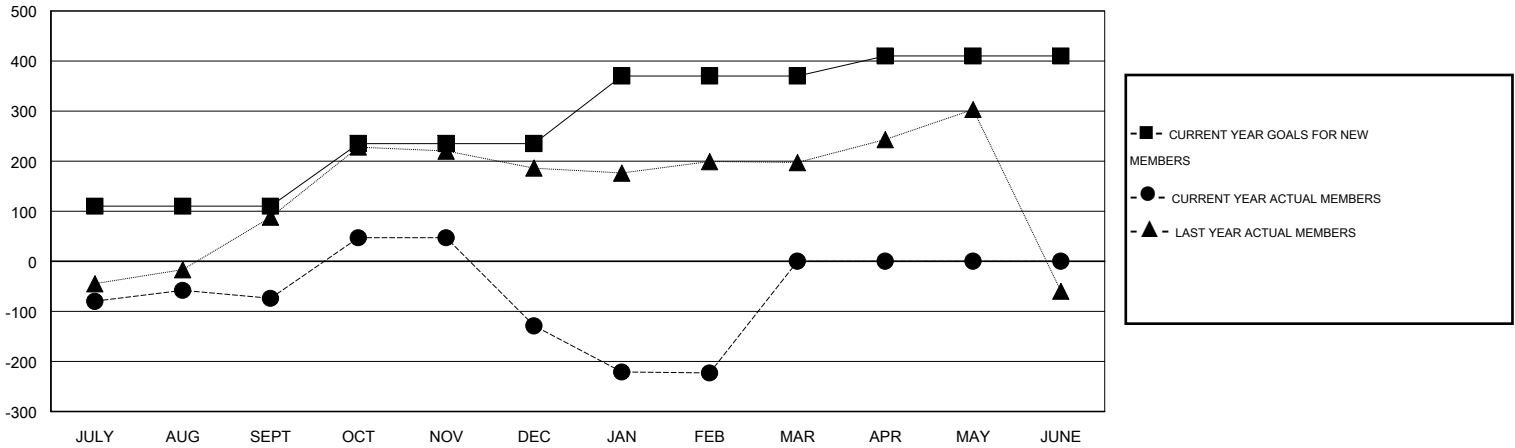
Clubs				
RESULTS FOR 2014-2015				
QUARTER	NEW CLUB GOAL	NEW CLUBS	DROPPED CLUBS	NET GAIN/LOSS
JULY/AUG/SEPT	3	0	0	0
OCT/NOV/DEC	2	1	7	-6
JAN/FEB/MAR	3	0	3	-3
APR/MAY/JUNE	2	0	0	0

Members				
RESULTS FOR 2014-2015				
QUARTER	NEW MEMBER GOAL	CHARTER AND NEW MEMBERS ADDED	DROPPED MEMBERS	NET GAIN/LOSS
JULY/AUG/SEPT	110	83	157	-74
OCT/NOV/DEC	125	153	208	-55
JAN/FEB/MAR	135	12	106	-94
APR/MAY/JUNE	40	0	0	0

GOALS AND ACTUAL NEW CLUBS CUMULATIVE



GOALS AND ACTUAL MEMBERS CUMULATIVE



DROPPED CLUBS: 10

54 CLUBS OF 106 ADDED 1 OR MORE NEW MEMBERS

GENDER DISTRIBUTION	
MALE	3,165 (88.88%)
FEMALE	396 (11.12%)

DROPPED MEMBERS	
DECEASED	8
CLUB CANCELLED	212
OTHER	251
TOTAL	471

[CLICK HERE FOR HEALTH ASSESSMENT DATA](#)

FAMILY UNIT MEMBERS	626
HEAD OF HOUSEHOLD	307
NON-HEAD OF HOUSEHOLD	319